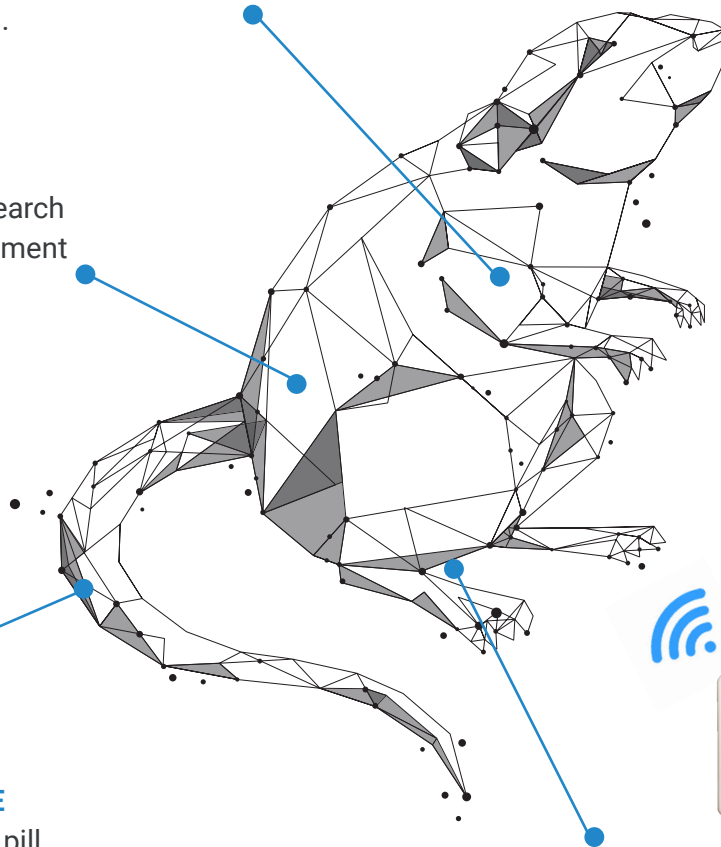


ANIPILL® is an innovative wireless monitoring device allowing reliable and continuous monitoring of core temperature in animals for research & veterinary purposes. This system is based on an implantable or ingestible capsule that wirelessly and continuously transmits temperature data to a dedicated monitor. A single device monitors data coming from up to 8 animals, whether they are group or single housed.

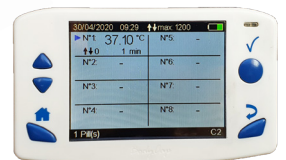
APPLICATION

- Infectiology
- Chronobiology & sleep research
- Virology & vaccine development
- Toxicology
- Inflammation
- Thermoregulation



TECHNICAL ADDED VALUE

- Internal memory inside the pill
- Different measurement period available
- Event marker possible
- Simple way of working
- Lightweight & tiny capsule
- Compatible with several animal species



SCIENTIFIC ADVANTAGES

- Reduces & refines animal use in research purpose
- Time saver
- Improves animal welfare
- Real time & *a posteriori* data collection
- Long term monitoring
- No data loss

TECHNICAL FEATURES

- Pills are provided sterilized
- Shelf storage: 2 years
- Weight: 1.7g
- Size: 17.7mm x 8.9mm
- Sampling period: 1min, 2min, 5min, 15min, 1h
- Life duration: 20 days to 10 months
- Accuracy: $\pm 0.2^{\circ}\text{C}$
- Calibration: 25°C to 45°C
- Data transmission: RF communication (433 MHz)
- Communication range: 1-3m (depending on species & environment)

